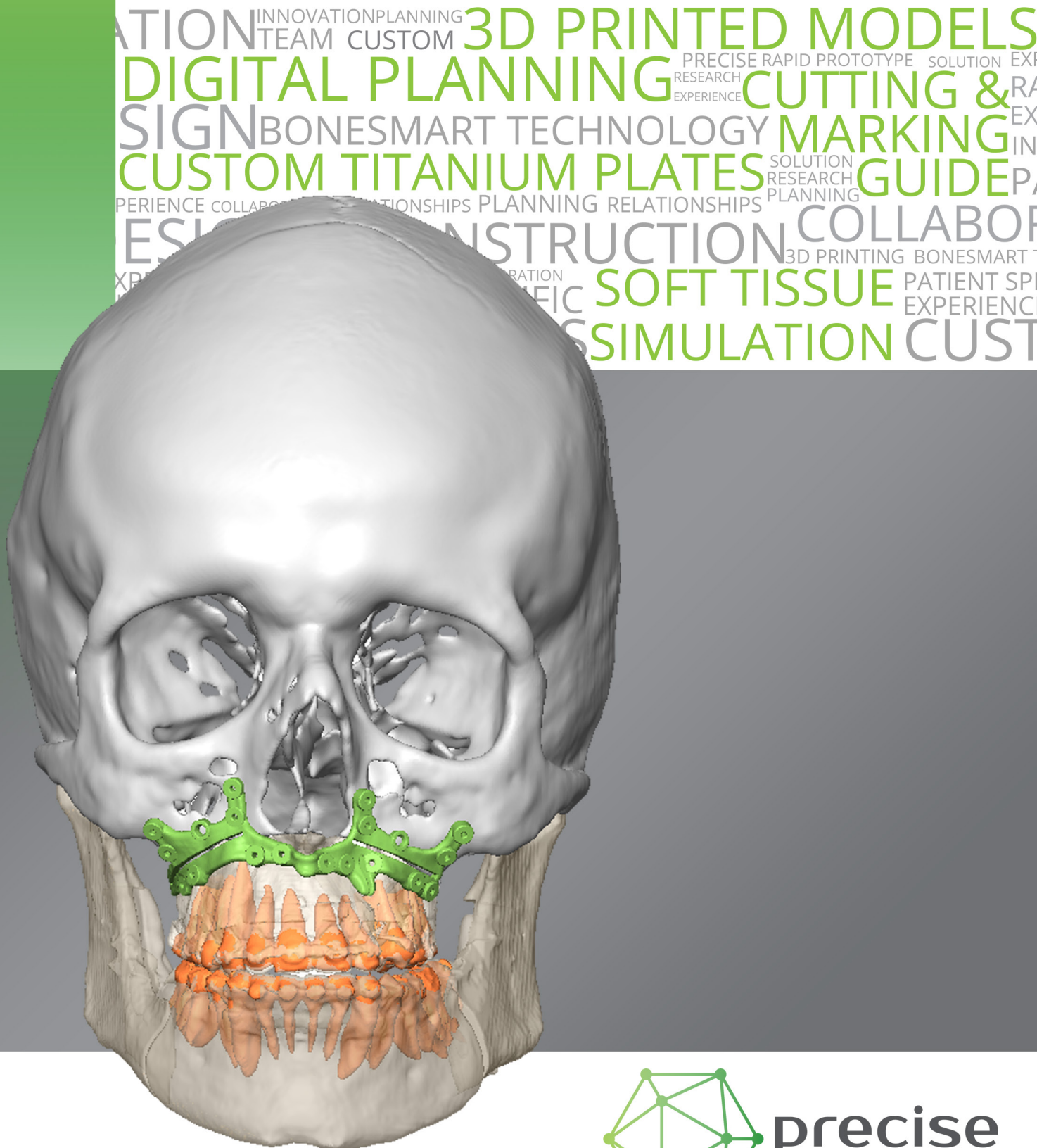


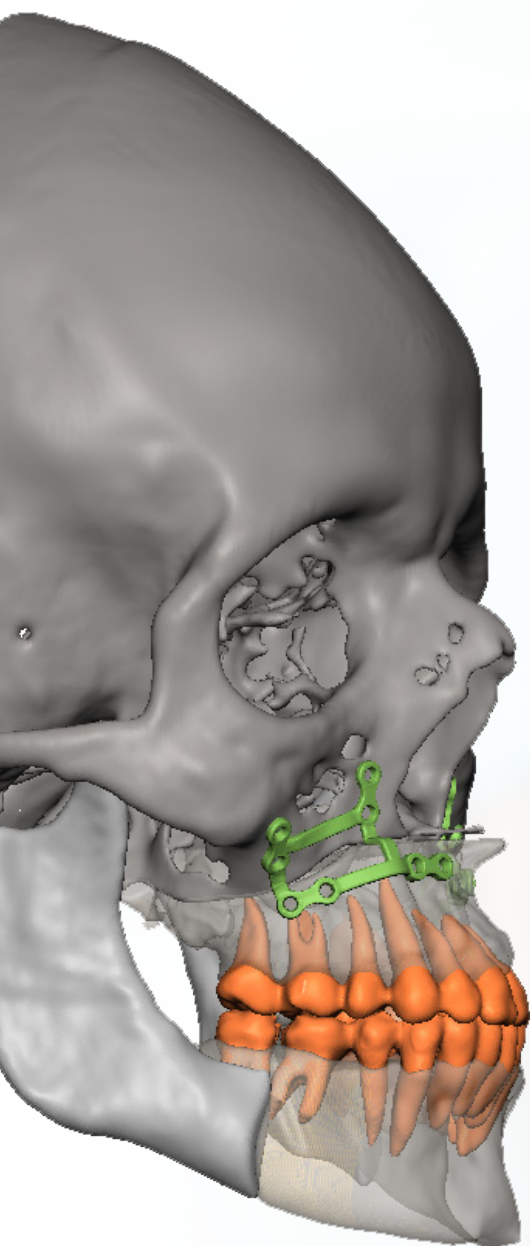
Virtual Surgical Planning for Orthognathic Surgery Precise Titanium System



INNOVATION PLANNING TEAM CUSTOM 3D PRINTED MODELS
DIGITAL PLANNING PRECISE RAPID PROTOTYPE SOLUTION EX
SIGN BONESMART TECHNOLOGY MARKING RA
CUSTOM TITANIUM PLATES SOLUTION RESEARCH PLANNING EX
PERIENCE COLLABORATION RELATIONSHIPS PLANNING IN
ESIA INSTRUCTION COLLABORATION 3D PRINTING BONESMART
XP IN SPECIFIC PATIENT SP
SIMULATION EXPERIENCE CUST



precise
BONESMART TECHNOLOGY



Digital orthognathic planning is taken to new heights using the new Precise Custom Titanium Plating System.

The surgical plan is transferred to the patient during surgery using the 3D printed Precise cutting and drilling guide, and the final position is located using the Precise Custom Titanium fixation plate.

Bony osteotomies and final screw location holes are made using the Precise cutting and drilling guide. After the down fracture, the maxilla is then “floated” into the final position, “docking” with the Precise custom titanium plate and aligning with the pre-drilled screw location holes.

The Precise System helps address the challenge of maxillary repositioning, even in complex asymmetric cases. The accuracy reduces the need for splints and plate bending and helps to avoid vital structures.

Let the Precise team invest **OUR** time into **YOUR** planning.

PROCEDURES

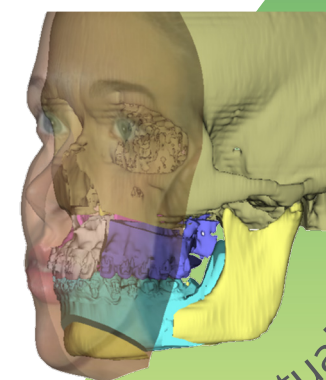
- LeFort I
- Segmental LeFort I
- Genioplasty
- Multi-Jaw surgery with asymmetry
- Orthognathic surgical planning with stock TMJ

BENEFITS

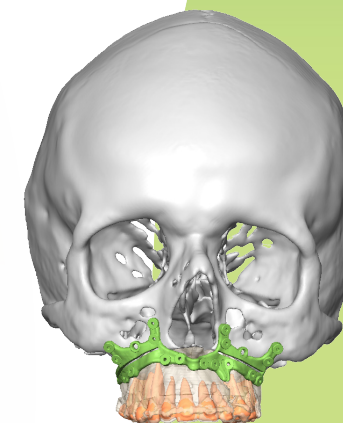
- Accurate reproduction of a pre-operative virtual surgical plan without the use of splints.
- Precise duplication of the planned osteotomies and removal of bony interferences.
- The titanium marking- and cutting guide allows you to drill one set of correlating screw holes for the cutting and the repositioning of the bony segments.
- Custom fixation plates eliminate intraoperative plate bending.

PRODUCTS

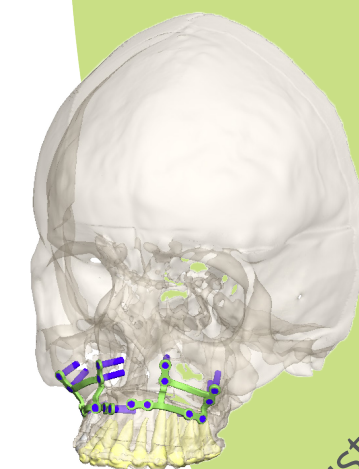
- Full treatment plan report
- A 3D video of the predicted bony and soft tissue movements
- Titanium marking and cutting guide
- Custom Orthognathic fixation plates (Maxilla and chin)
- Soft tissue simulation
- Back up Intermediate and final splint



Virtual Orthognathic Planning



3D Printed Titanium Marking & Cutting Guide



Custom Orthognathic Fixation Plates

TIMELINE

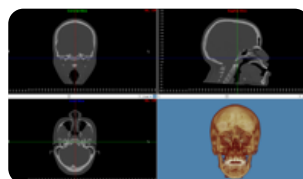
13 DAYS

DESIGN

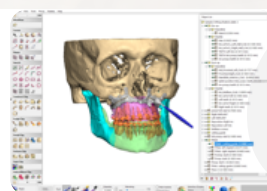
PRINT

DAY

Receive Scans, Photos and Stone models (2 Days)

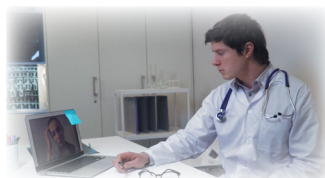


Surgeon meeting and Orthognathic Planning*



Surgeon Approval*

Data Import and preliminary design



Cutting Guide and Fixation Plate Design (3 days)

DAY

3D Titanium Printing (5 Days)



Cutting Guide & Fixation Plate Verification



Delivery



* Timeline may be extended due to design changes



For more information on this or other services we offer please
contact

☎ Carol : +27(72) 709-9654

✉ info@precise3D.co.za

🌐 www.precise3d.co.za

📷 precise_bonesmart_technology

📌 Precise Bonesmart Technology