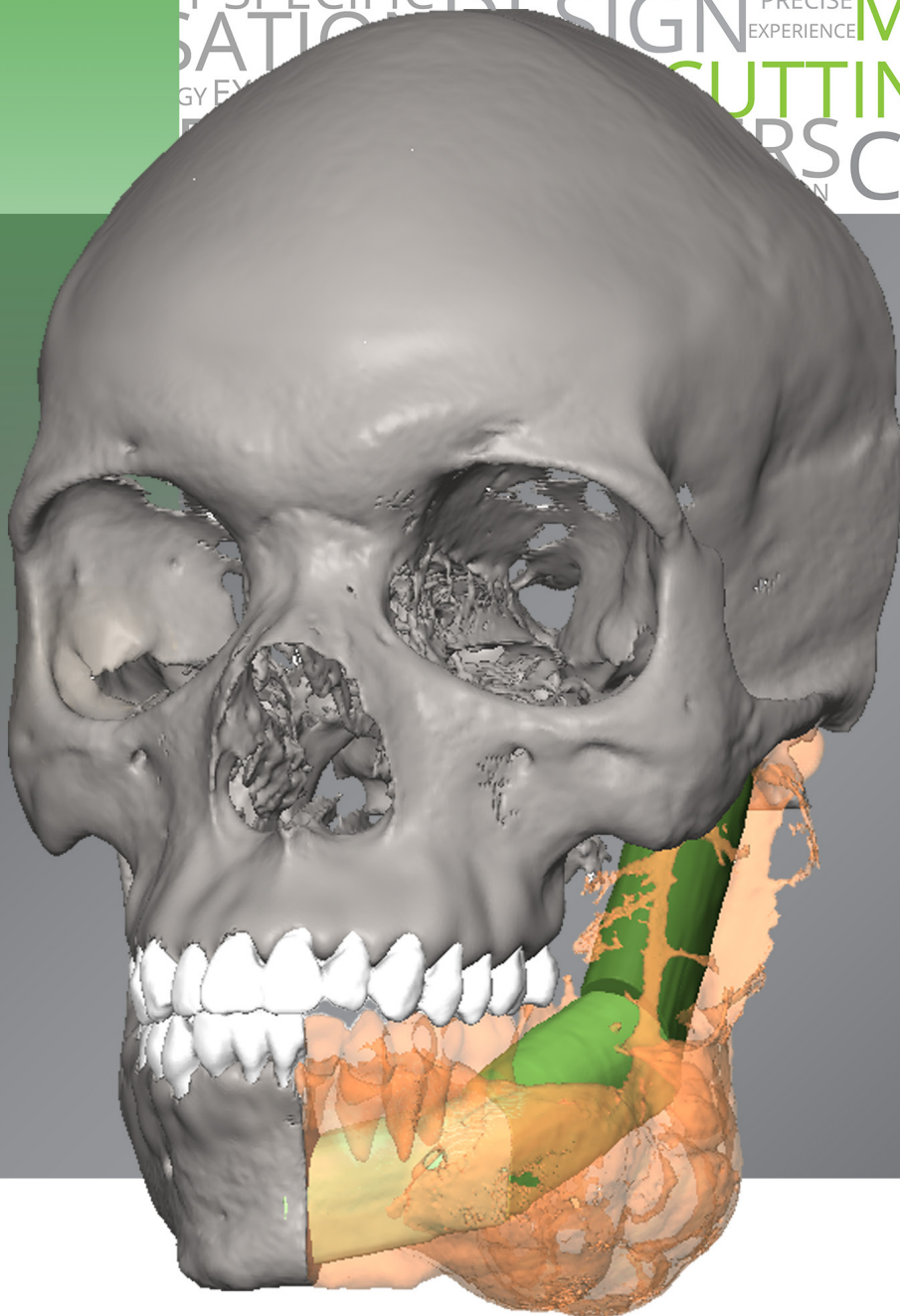
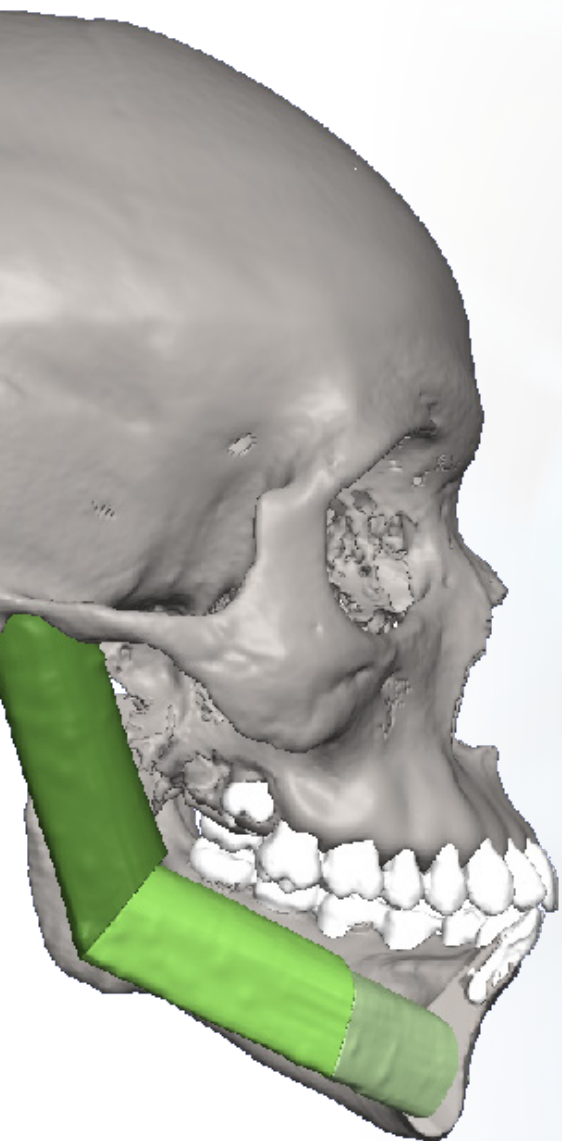


# Virtual Surgical Planning for Fibula Free Flap Reconstruction

INNOVATION 3D PRINTED MODELS  
DIGITAL PLANNING 3D PRINTING SOLUTION EXPERIENCE R  
DESIGN FIBULA RE  
PRINTING PATIENT SPECIFIC RECONSTRUCTION INNOVATION TEAM PLANNING  
IENCE PRE-BENT PLATE EXPERTS CUTTING  
TEAM RAPID PROTOTYPE CUSTOMISATION RESEARCH GUIDE BO  
T SPECIFIC DESIGN PRECISE EXPERIENCE MANDIBLE COLLA  
SATION CUTTING GUIDE TEAM RA  
GY EX RS CUSTOMISATION







Precise Virtual Surgical Planning (VSP) for Fibula Free Flap Reconstruction brings multiple disciplines together ensuring a streamlined and accurate surgical plan.

A full range of surgical guides guarantees a precise fit and accurate positioning of the fibula graft and Pre-Bent Fixation Plate. This allows for accurate soft tissue positioning, anastomosis location and future dental rehabilitation.

The fibula graft is safely housed using your choice of a Precise Pre-bent Reconstruction plate or a \*custom-designed 3D printed plate.

Let the Precise team invest **OUR** time into **YOUR** planning.

## INDICATIONS

- Fibula Free Flap for mandible and maxilla reconstruction
- Revision surgery
- Options for Scapula, Iliac crest and Radial arm grafts

## BENEFITS

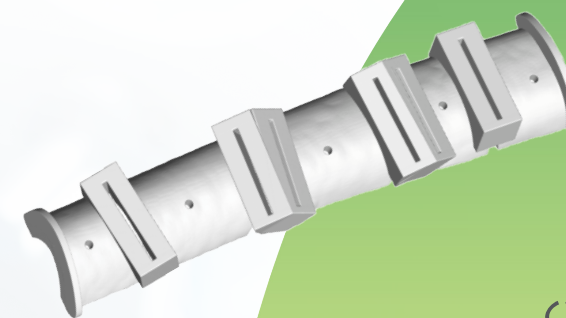
- Patient matched cutting guides
- Autoclavable polyamide cutting guides
- Segment length mapping
- Cutting guides allow for single stage surgery
- Dental implant planning for optimal prosthetic outcome
- 3D visualisation of osteotomies and final reconstruction

## PRODUCTS

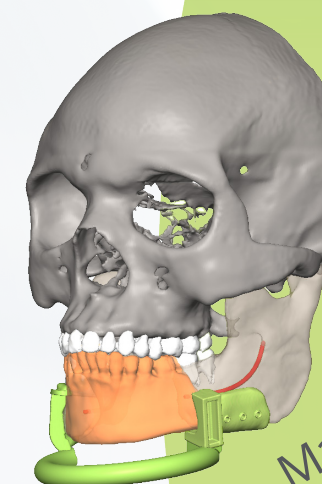
- Pre-bent reconstruction plate or \*custom 3D printed Titanium plate
- 3D printed mandible model with final fibula placement
- Mandible cutting guide
- Fibula cutting guide

## QUALITY ASSURANCE

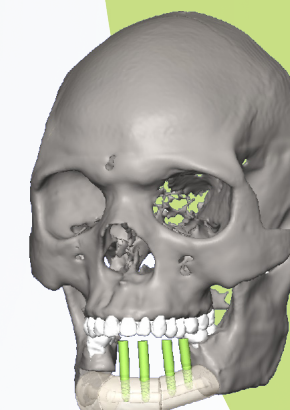
- \*Produced by a SAHPRA Licensed Manufacturer
- \*Design, Development and Manufacturing is ISO13485 certified



Fibula Cutting Guide



Mandibular Cutting Guide



Dental Implant Position Verification

## TIMELINE

7 DAYS

### DESIGN

### PRINT

DAY

CT Scan Received



Data Import  
As Scanned Images  
Sent to Surgeon

Surgeon  
Treatment Plan  
Received\*



3D Design &  
Surgeon  
Approval\*\*

Cutting  
Guide  
Design

DAY

3D Printing  
(2 Days)



Pre-contoured Plate

or

3D Printed Plate\*\*\*

Surgery



\*\* Timeline may be extended due to design changes

\*\*\* for 3D printed plate add an additional 3 week manufacturing time



For more information on this or other services we offer please contact

+27 (11) 991-7007

info@precise3D.co.za

www.precise3d.co.za

precise\_bonesmart\_technology

Precise Bonesmart Technology